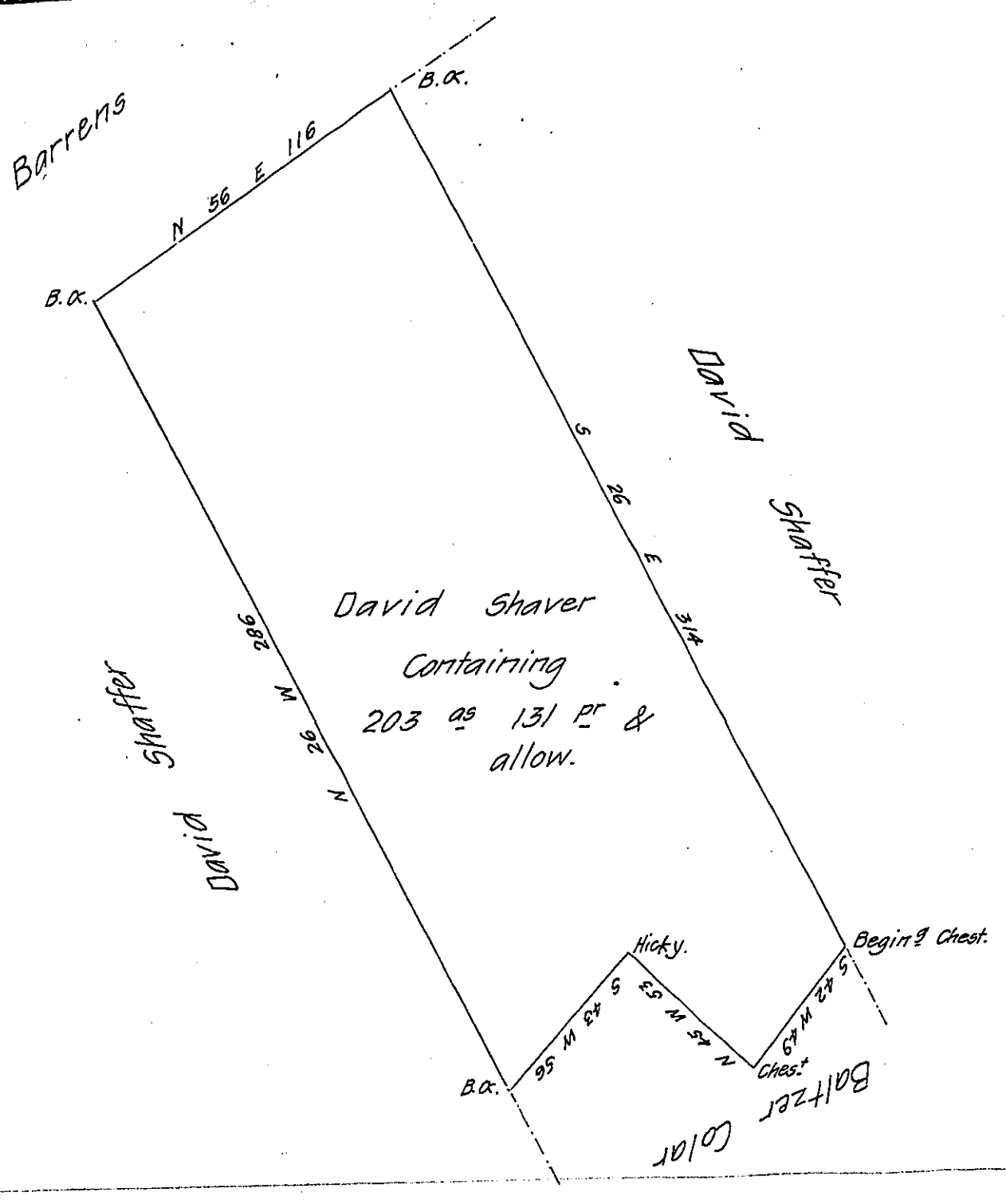


FORM NO 1.



Situate in Shrewsbery township in the County of York. Containing as above set forth 203<sup>ac</sup> & 131 perches and the allowance &c. Originally surveyed in pursuance of a Warrant granted to David Shaver for 50<sup>ac</sup> dated the 15<sup>th</sup> day of March 1749 \*

Calculated, examined &c<sup>a</sup> the 14<sup>th</sup> day of September 1828 and Returned per Contract said to be patented about 20 years ago to Philip Shaffer who is the present owner and occupier

To Gabriel Hiester Esq. Danl Small D.S.  
Surveyor General.

\* And another Warrant granted to him dated 10<sup>th</sup> September 1750 for 50<sup>ac</sup>.

IN TESTIMONY that the above is a copy of the original remaining on file in the Department of Internal Affairs of Pennsylvania, made conformably to an Act of Assembly approved the 16th day of February, 1833, I have hereunto set my Hand and caused the Seal of said Department to be affixed at Harrisburg, this fifteenth day of December 1908

*Lucy Houch*  
Secretary of Internal Affairs.